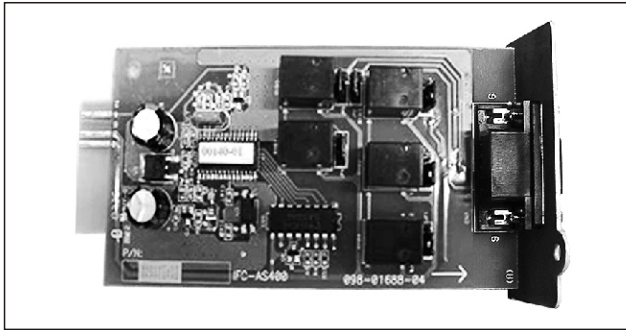


PRODUCT APPEARANCE



PRODUCT FUNCTION

Through As400 card, you can get the voltage free dry-contact signals for the programmable controller and management system.

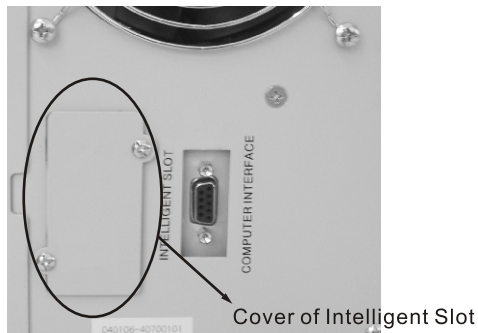
DB-9 Port

APPLICATION DOMAIN

- ① IBM Server, Personal PC & Workstations equipments
- ② Auto-control Industrial equipment & communication application
- ③ Users can design the application program by the interface of AS400 card

INSTALLATION

- ① Remove the cover of Intelligent Slot on the rear panel.

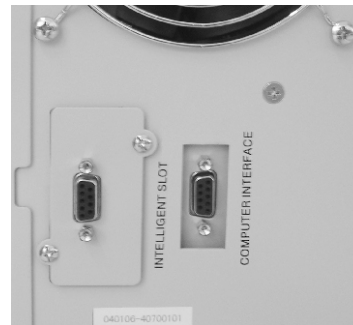


1

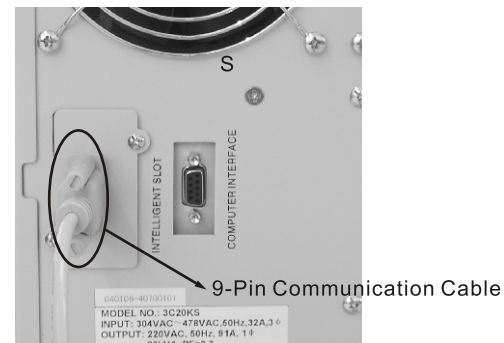
- ② Insert AS400 card into the Intelligent Slot.



- ③ The cover of AS400 card should attach close to the rear panel. Then fixing it by using screws.



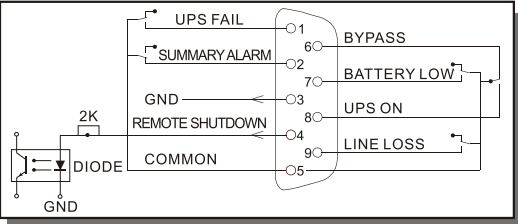
- ④ Use the 9 Pin communication cable to connect the UPS and equipment to implement the remote monitor and control.



2

SPECIFICATION

Internal Circuit of DB-9 Port



Pin Definition

Pin	Pin Name	Reasons	I/O	Normal open / normal close setting jumper pin
Pin1	UPS Fault	One or some types of Ups fault occurred.	O/P	NO:JP2 2-1 NC: JP2 2-3
Pin2	Summary Alarm	One or some following occurred: fault, warning, bypass active, Utility Failure, loss communication	O/P	NC: JP4 2-1 NO:JP4 2-3
Pin3	GND	Common for Pin4	I/P	
Pin4	Shutdown	If the ups received 3~10s shutdown signal working on battery, it will shutdown itself after 12 Seconds delay.	I/P	
Pin5	Common	Common for Relays	I/P	
Pin6	Bypass Active	The UPS has a failure (or is being serviced) and power is being provided to the system from the utility power line. If utility power fails, the system will lose power.	O/P	NC:JP6 2-1 NO: JP6 2-3
Pin7	Battery Low	The battery source for the UPS is below the predetermined energy level. If the energy level continues to decrease, the UPS may not be able to supply energy to the system.	O/P	NO:JP3 2-1 NC: JP3 2-3
Pin8	UPS On	The UPS is powered on and is capable of providing power to the system (whether utility power is available or not).	O/P	NO:JP5 2-1 NC: JP5 2-3
Pin9	Utility Failure	A failure in utility power to the UPS has occurred. The UPS is providing power to the system.	O/P	NO:JP1 2-1 NC: JP1 2-3

Electric Parameter of DB-9 Port

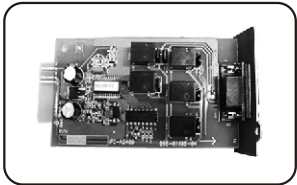
	Parameter	SYMBOL	MAX.	UNIT
Diode	Reverse Voltage	V_R	6	V
	Forward Current	I_F	80	mA
	Peak Forward Current	$I_{F(peak)}$	1	A
Relay	DC Voltage	V_{DC}	24	V
	DC Current	I_{DC}	1.0	A

Function Description

Phenomenon	Reason
Pin1 short to Pin5	UPS internal failure
Pin2 short to Pin5	UPS Failure, Utility Failure, Battery Low, Bypass Active
Pin6 short to Pin5	Bypass Active
Pin7 short to Pin5	Battery voltage is low
Pin8 short to Pin5	UPS working in Inverter (AC) mode
Pin9 short to Pin5	Utility Failure

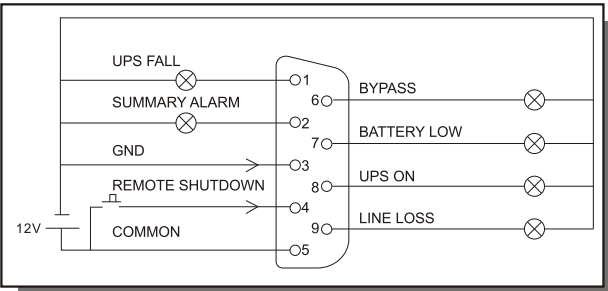
User Manual

AS400 Card



APPLICATION

Below shows the circuit of basic application to implement the remote monitor and control.



user interface